

EXPLANATION FOR GEOLOGIC MAP AND CROSS SECTION

SYMBOLS FOR GEOLOGIC MAP

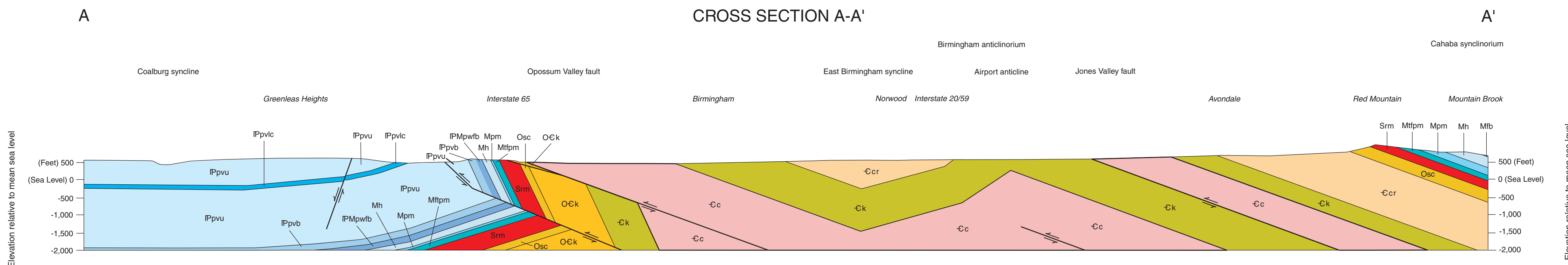
MISSISSIPPIAN AND PENNSYLVANIAN LOWER PENNSYLVANIAN QUATERNARY	POTTSVILLE FORMATION	<p>Qal Alluvium. Unconsolidated quartz silt, sand, and gravel containing clasts of local bedrock.</p> <p>IPpvc Lick Creek Sandstone Member. Yellowish-brown weathering sandstone and conglomerate sandstone containing variably colored chert, quartzite, and sandstone pebbles.</p> <p>IPpvu Pottsville Formation upper part. Dark-gray silty shale containing intervals of light- to medium-gray lithic sandstone and interbeds of coal and underclay.</p> <p>IPpvb Boyles Sandstone Member. Light-pinkish-gray quartzose sandstone containing intervals of quartz pebble conglomerate and a middle interval of dark-gray micaceous shale.</p> <p>IPMpw Parkwood Formation. Medium- to dark-gray shale containing intervals of light- to medium-gray lithic sandstone and rare limestone and coal.</p> <p>IPMpwfb Parkwood Formation, Floyd Shale, and Bangor Limestone undifferentiated. Medium- to dark-gray shale containing intervals of light- to medium-gray lithic sandstone and rare limestone and coal (Parkwood); dark-gray shale containing siderite nodules (Floyd); light- to medium-gray bioclastic and oolitic limestone containing olive-gray and grayish-red-purple mudstone and fossiliferous chert in the upper part (Bangor).</p> <p>Mfb Floyd Shale and Bangor Limestone undifferentiated. Dark-gray to black shale containing siderite nodules (Floyd); medium-gray, bioclastic and oolitic limestone containing olive-gray and grayish-red-purple mudstone and fossiliferous chert in the upper part (Bangor); the Bangor was not seen on the northwest limb of the Birmingham anticlinorium.</p> <p>Mh Hartselle Sandstone. White to pinkish-tan, thin- to thick-bedded quartzose sandstone.</p> <p>Mpm Pride Mountain Formation. Dark-gray shale containing limonite stringers and nodules.</p> <p>Mtspm Tuscumbia Limestone, Fort Payne Chert, and Maury Formation undifferentiated. Light-gray, medium- to thick-bedded, fossiliferous, sparry limestone (silicified near surface) with minor chert (Tuscumbia); medium- to dark-gray, thin- to medium-bedded, variably fossiliferous chert with partings and interbeds of shale (Fort Payne); greenish-gray and orange clay (Maury).</p>
--	----------------------	--

UPPER CAMBRIAN	KNOX GROUP	<p>Srm Red Mountain Formation. Dark-purplish-red, dark-reddish-brown, olive-gray and light-gray, variably ferruginous and fossiliferous, fine- to coarse-grained sandstone interbedded with siltstone and shale, with minor pebbly sandstone and fossiliferous limestone to oolitic ironstone.</p> <p>Osc Sequatchie Formation and Chickamauga Limestone undifferentiated. Variably colored, mottled, fossiliferous limestone (Sequatchie); medium-light-gray to dark-gray, laminated to bioturbated, variably fossiliferous limestone, green to gray calcareous shale, and minor greenish-gray bentonite (Chickamauga); the Chickamauga and Sequatchie were not seen on the northwest limb of the Birmingham anticlinorium.</p> <p>Ock Knox Group undifferentiated. Light- to medium-gray, laminated, finely crystalline, cherty dolomite and light- to medium-gray limestone and limy dolomite; produces abundant, primarily dense, chert residuum.</p> <p>Cr Copper Ridge Dolomite. Light- to medium-gray, laminated to stromatolitic, finely crystalline, cherty dolomite; produces abundant dense, stromatolitic chert residuum.</p> <p>Ck Ketona Dolomite. Light- to medium-gray, thick-bedded, finely to coarsely crystalline dolomite.</p>
		<p>Cc Conasauga Formation. Lowest exposed part interbedded dark-gray shale and micritic limestone; middle and upper parts include dark-gray, stylonodular, bioclastic, and oolitic limestone; upper part dolomitic.</p>
MIDDLE TO UPPER CAMBRIAN		

---x---	Contact, located very approximately, showing location of control point (contact exposed or closely located)	⊕	Horizontal beds
▼▼▼▼	Thrust fault, located very approximately, sawteeth on upper plate	⊕	Vertical beds
—D— U	Normal fault, located approximately, D on downthrown block and U on upthrown block where known	⊕ ₇₅	Overturned beds
---D--- U	Normal fault, located very approximately, D on downthrown block and U on upthrown block where known	⊕	Anticline, showing trace and direction of plunge
.....	Contact or fault, concealed beneath mapped units	⊕	Syncline, showing trace and direction of plunge
—45	Strike and dip of beds		

SYMBOLS FOR CROSS SECTION A-A'

———	Stratigraphic contact
⇄	Fault, showing relative movement



CROSS SECTION A-A' AND EXPLANATION FOR THE GEOLOGIC MAP OF THE BIRMINGHAM NORTH 7.5-MINUTE QUADRANGLE AND CROSS SECTION, JEFFERSON COUNTY, ALABAMA

By
G. Daniel Irvin and W. Edward Osborne
2006



Berry H. (Nick) Tew, Jr.
State Geologist